

MRT Jakarta Project South – North Line Phase 1

Jakarta, 5 March 2015



RTJ mrt jakarta
increasing mobility, improving life quality

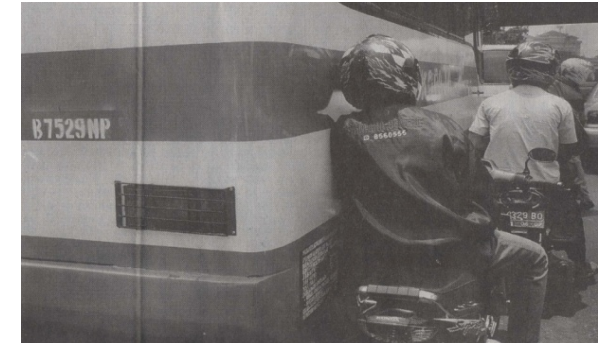
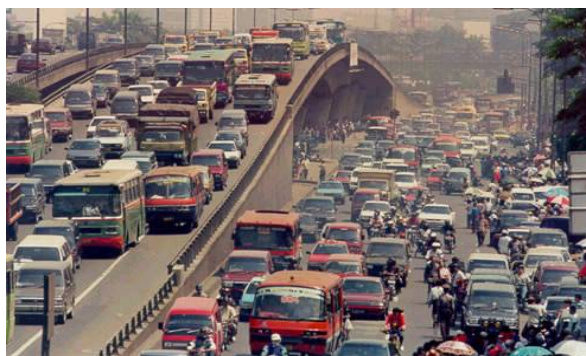


Evolution of Jakarta City

PAST



AT NOW



Why Does Jakarta Need MRT?

<1% The annual average growth of Jakarta's roads.

>1,000 New vehicles to hit Jakarta every day

A Total gridlock in 2020

It is estimated that Jakarta will face total road jam in 2020 if there are no breakthrough actions to be taken to provide the better public transportation system.



Economic Loss

IDR 65 Trillion/Year

In 2005, it was estimated that the traffic jam would waste 12.8 Trillion Rupiah, an accumulation of some aspects (time, fuel, and health problems).

Air Pollution

Motor vehicles contribute up to **80%** of air pollution.

- 1** To provide an alternative model of transportation which is fast, safe and reliable.
- 2** To provide opportunities for developing and revitalizing areas within the MRT corridors and stations.
- 3** To minimize air pollution and traffic congestion.

“*The MRT Jakarta project will contribute to Jakarta’s economic growth and infrastructure development in Indonesia.*”



PT MRT JAKARTA

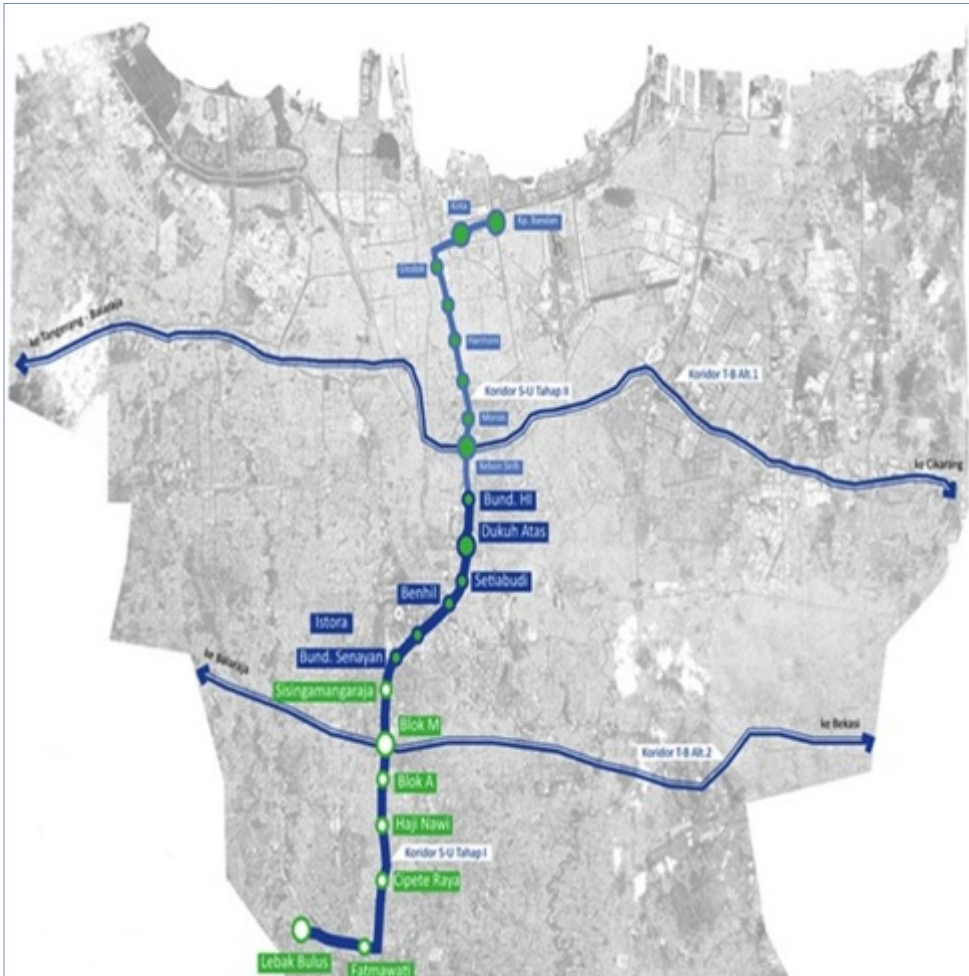
- PT MRT Jakarta was established on June 17, 2008, based on Regional Regulation (*Peraturan Daerah*) No. 3 Year 2008 (now as amended in Regional Regulation No. 7 Year 2013) & No. 4 Year 2008 (now as amended in Regional Regulation No. 8 Year 2013).
- PT MRT Jakarta was established as the result of recommendations from a study conducted by JICA and agreements between JICA and Government of Republic of Indonesia.

MAIN FUNCTION

- **To develop and build** MRT infrastructures and facilities.
- **To operate & maintain (O&M)** MRT infrastructures and facilities.
- **To develop** the area around depot and stations along MRT corridors.



Features of MRT Jakarta Project



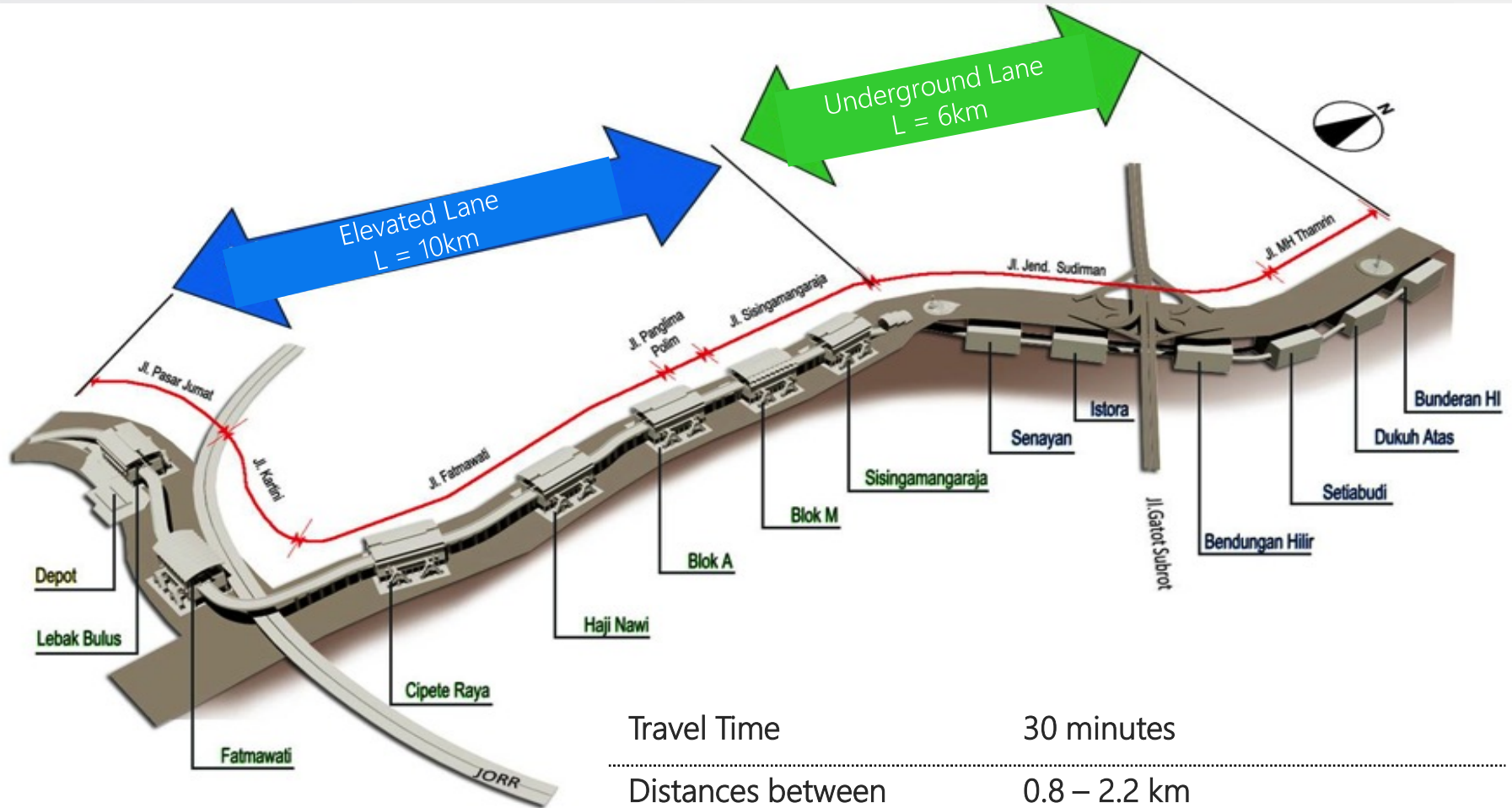
Number of Corridors (Line) **2 Corridors**
South – North Corridor
East – West Corridor

Number of Stations **21 Station**
South – North Corridor
48 Stations
East – West Corridor

Length of Line **25 Km**
South – North Corridor
87 Km
East – West Corridor

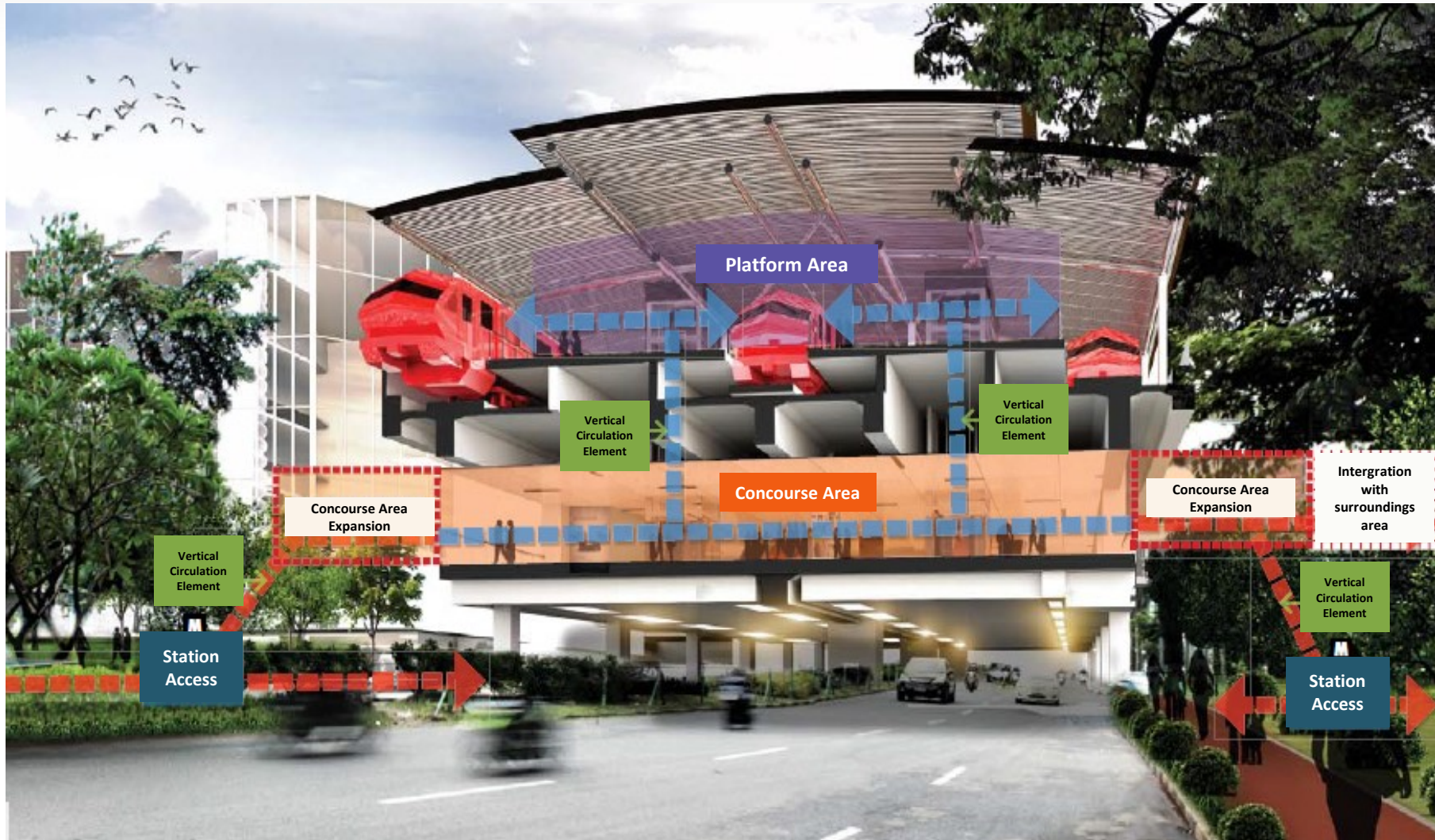
Target for Operation **2018**
Phase I South – North Corridor
2020
Phase II South – North Corridor
2024-2027
East – West Corridor

Phase I South – North Line Route Map

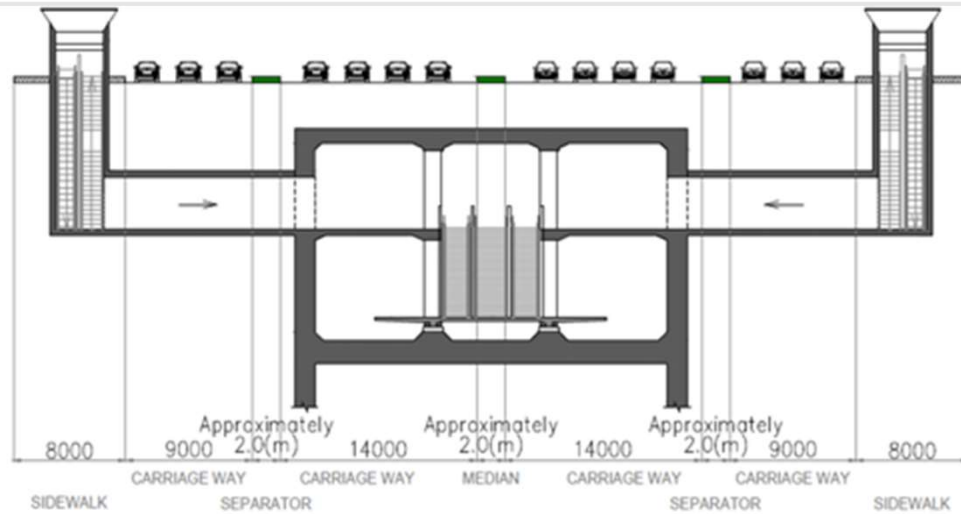


Travel Time	30 minutes
Distances between station	0.8 – 2.2 km
Headway	5 minutes (2018)
Targeted Passengers	173.400 passengers/day (2018)

Illustration of Elevated Station Blok M



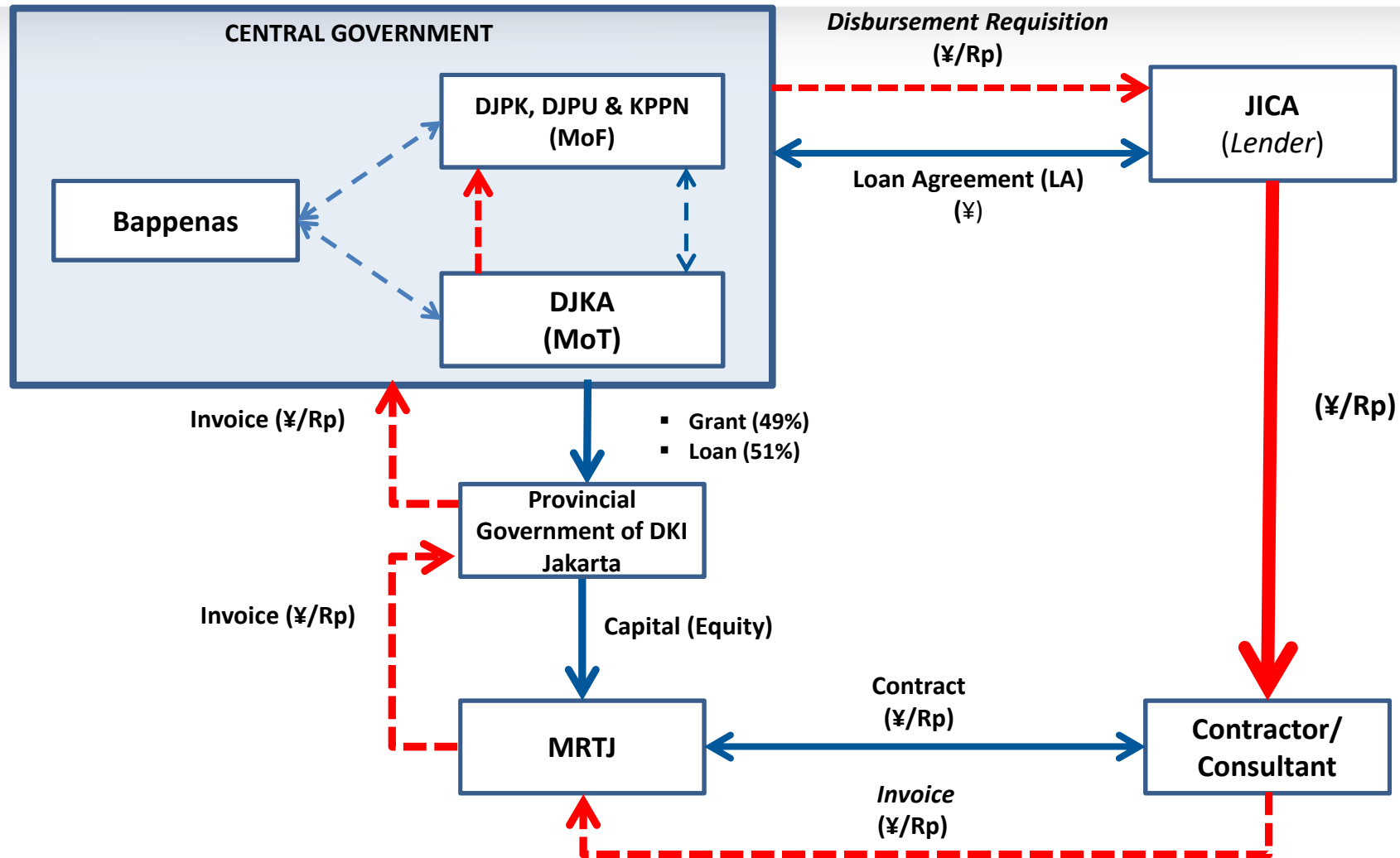
Typical Illustration of Underground Station



- Underground entrance
- Escalator
- Concourse Area
- Platform Level
- Underground track

Source : JMEC

Funding Scheme of MRT Jakarta Project

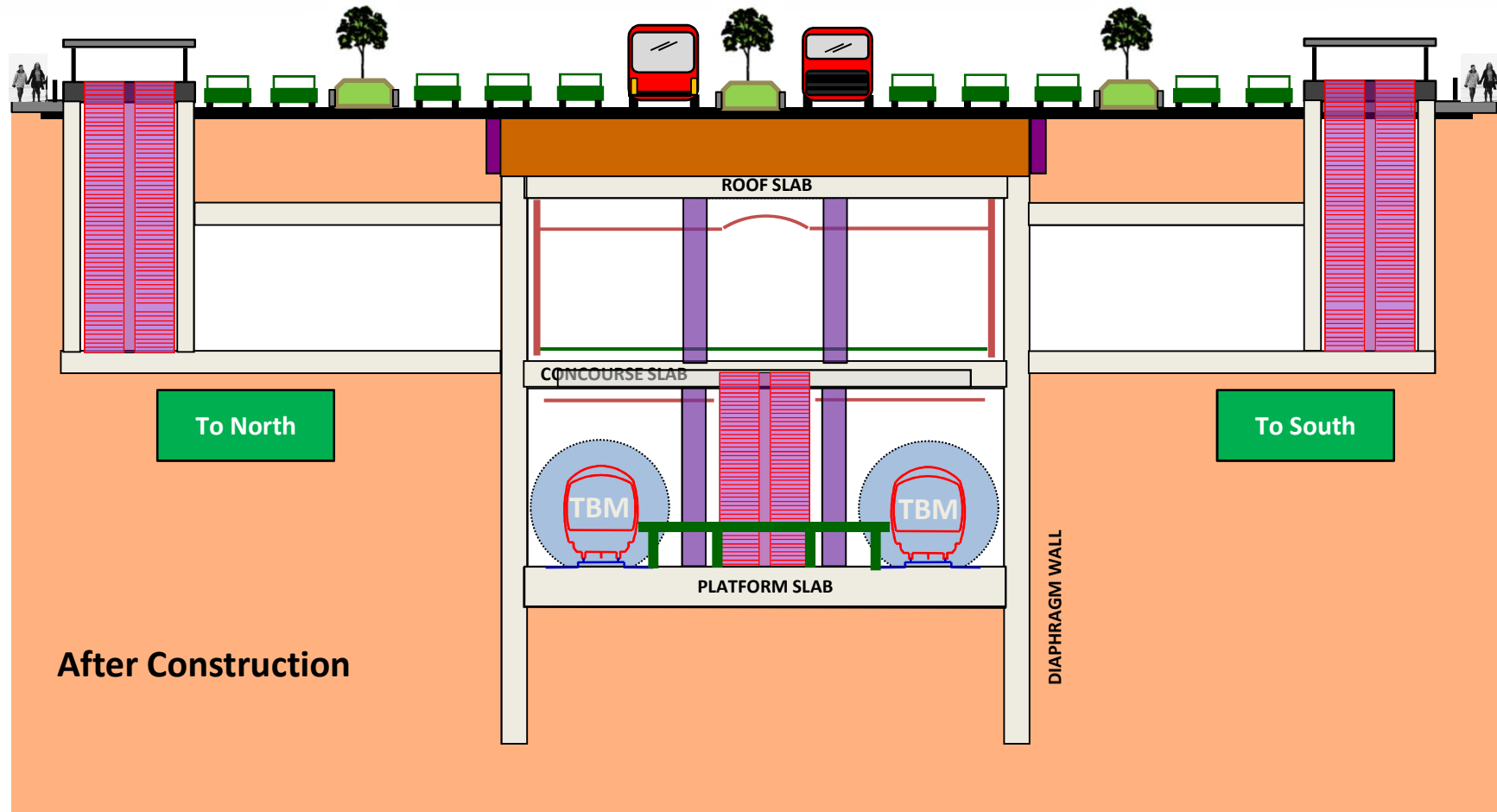


MRT Jakarta is the first project in Indonesia that implements **three sub level agreement scheme** between the lender (JICA) and the Central Government, the Local Government, and the Regional Owned Enterprise (*Badan Usaha Milik Daerah*) (PT MRT Jakarta).

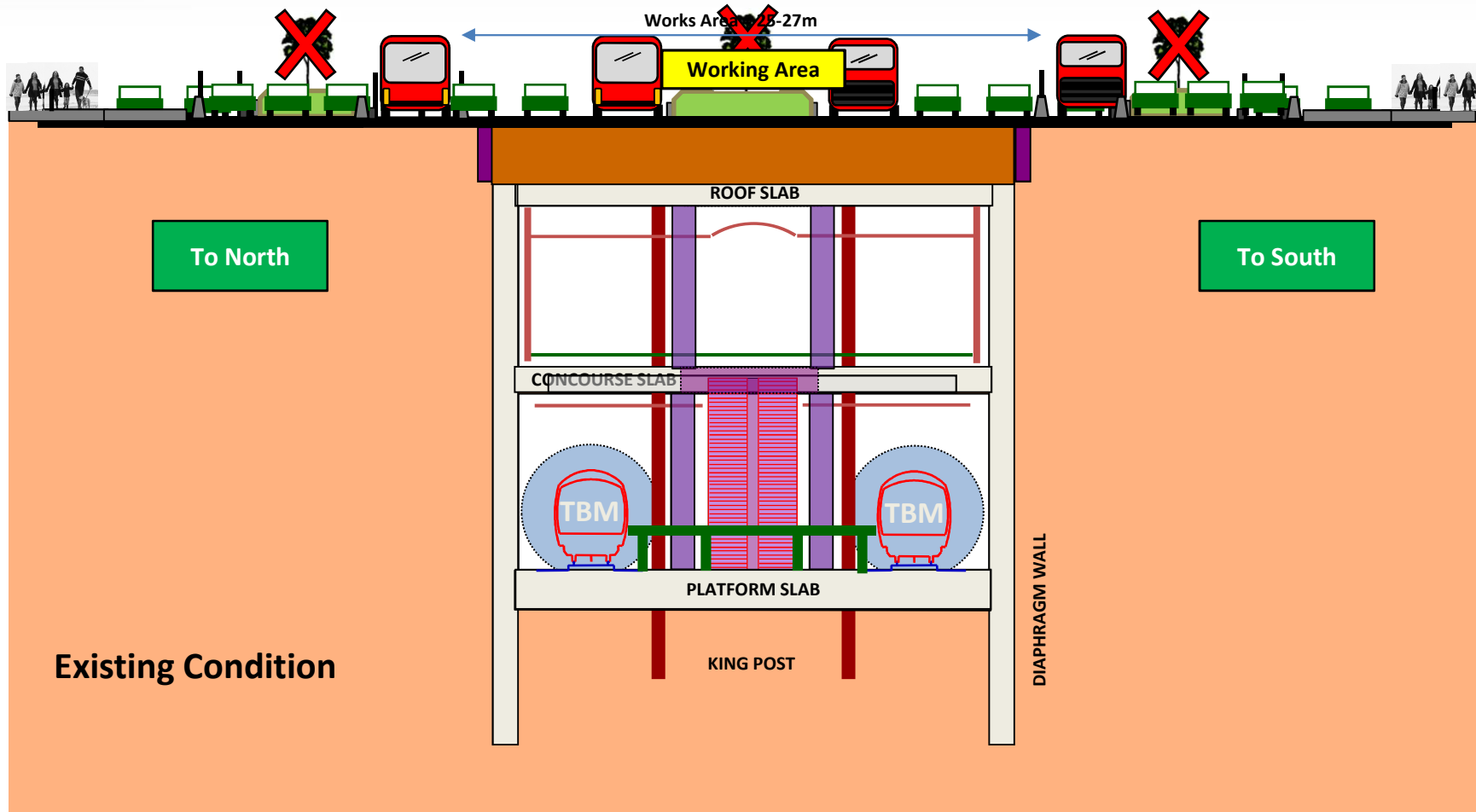
Construction of MRT Jakarta Project



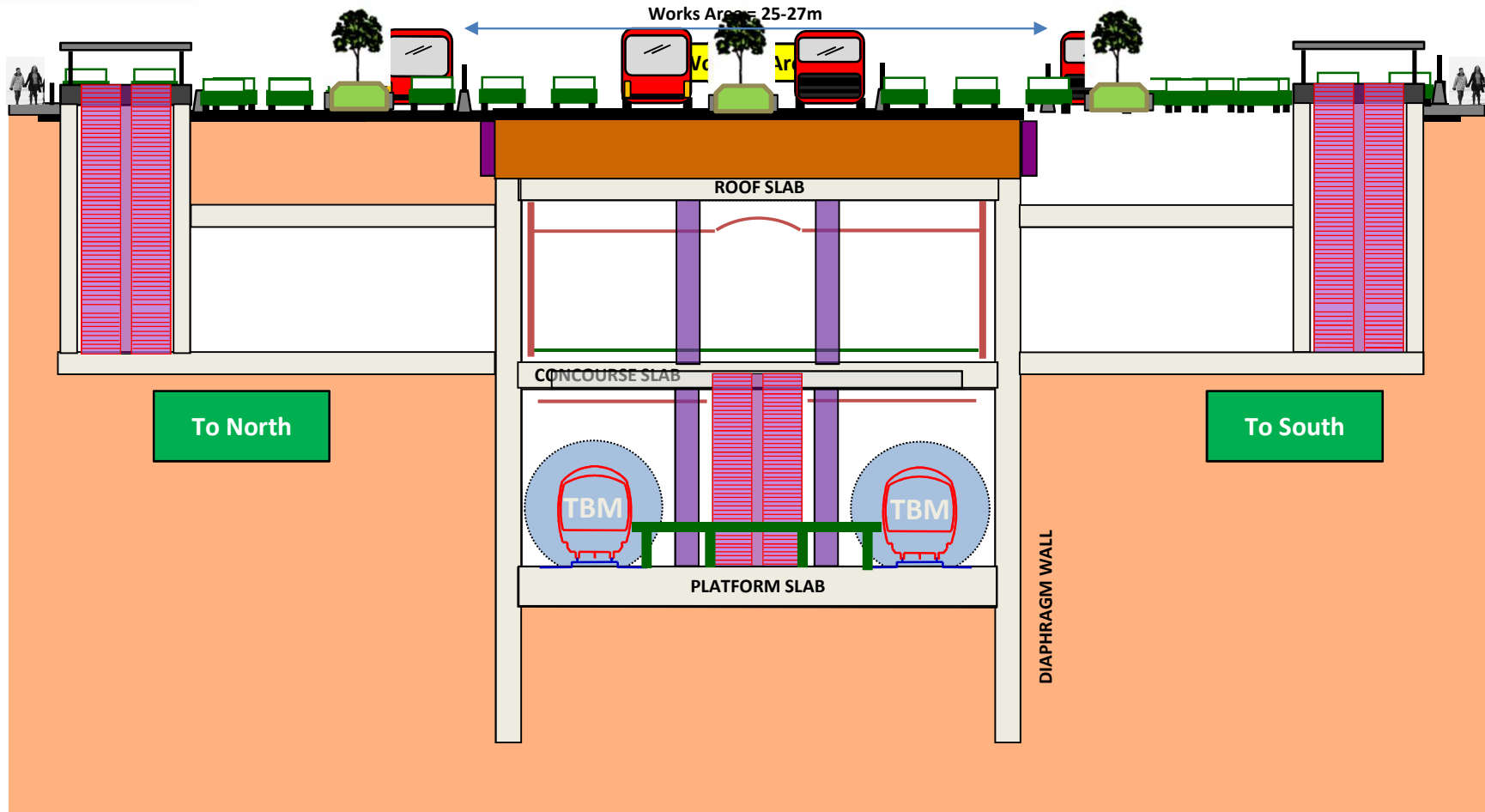
Underground Station Construction Sequence



Underground Station Construction Sequence



Underground Station Construction Sequence



Underground construction utilizing the Tunnel Boring Machine (TBM) to cut through the underground soil in order to connect every underground station.

Tunnel Boring Machines (TBM)

Operated by experienced foreign contractors.

Why Bored Tunnel?

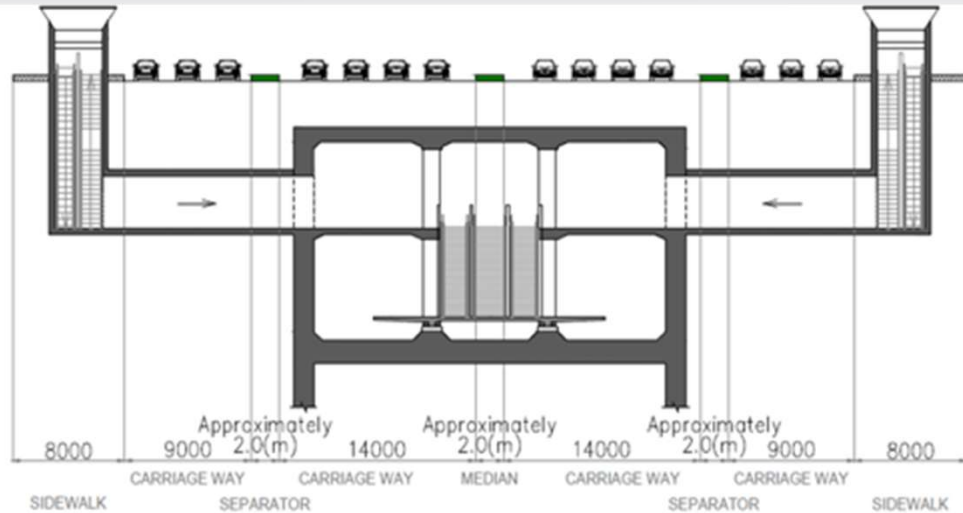
- Optimize land utilization
- Reducing the impact for surface level soil
- Lack of space for cut & cover tunneling method



Underground construction utilizing the Tunnel Boring Machine (TBM) to cut through the underground soil in order to connect every underground station. ”



Illustration for Underground Station



Concourse



Source : JMEC

- Entrance
- Escalator
- Unpaid zone
- Platform
- Underground Track



Concourse

Illustration for Underground Station Entrance



Bunderan HI Station



Dukuh Atas Station



Construction Progress





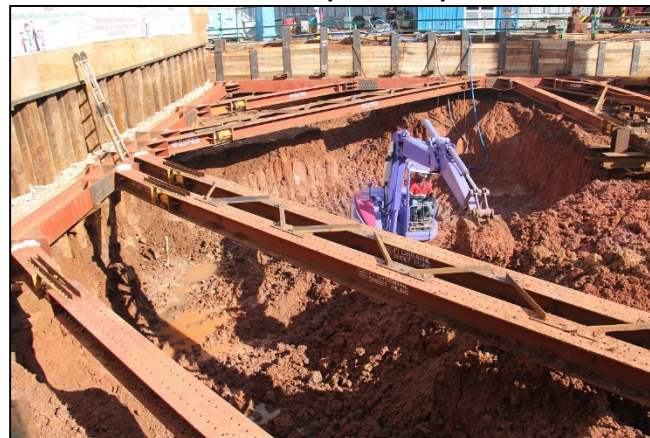
CP 104 (BUNDARAN SENAYAN)



CP 103 (BLOK M)



CP 104 (SENAYAN)



CP 104 (JALUR TRANSISI)



CP 104 (ISTORA)



CP 105 (BENDUNGAN HILIR)



CP 105 (SETIABUDI)



CP 106 (DUKUH ATAS)



CP 106 (BUNDARAN HI)

THANK YOU

PT MRT JAKARTA

Wisma Nusantara 21th Floor

Jln MH Thamrin 59

Jakarta 10350-Indonesia

Tel: (62 21) 3906454 Fax (62 21) 3155846

www.jakartamrt.com

For further information please contact:

Corporate Secretary PT MRT Jakarta

Email: corsec@jakartamrt.com

IMPORTANT NOTICE

- This presentation is delivered subject to the agreed terms of PT MRT Jakarta
- The presentation and the accompanying slide pack are provided solely for the benefit of the parties and are not to be copied, quoted or referred to in whole or in part without PT MRT Jakarta prior written consent.
- PT MRT Jakarta accepts no responsibility to anyone other than the parties identified for the information contained in this presentation.
- The presentation, data and other written information provided by PT MRT Jakarta are specifically to be used for the Project and restricted for public

